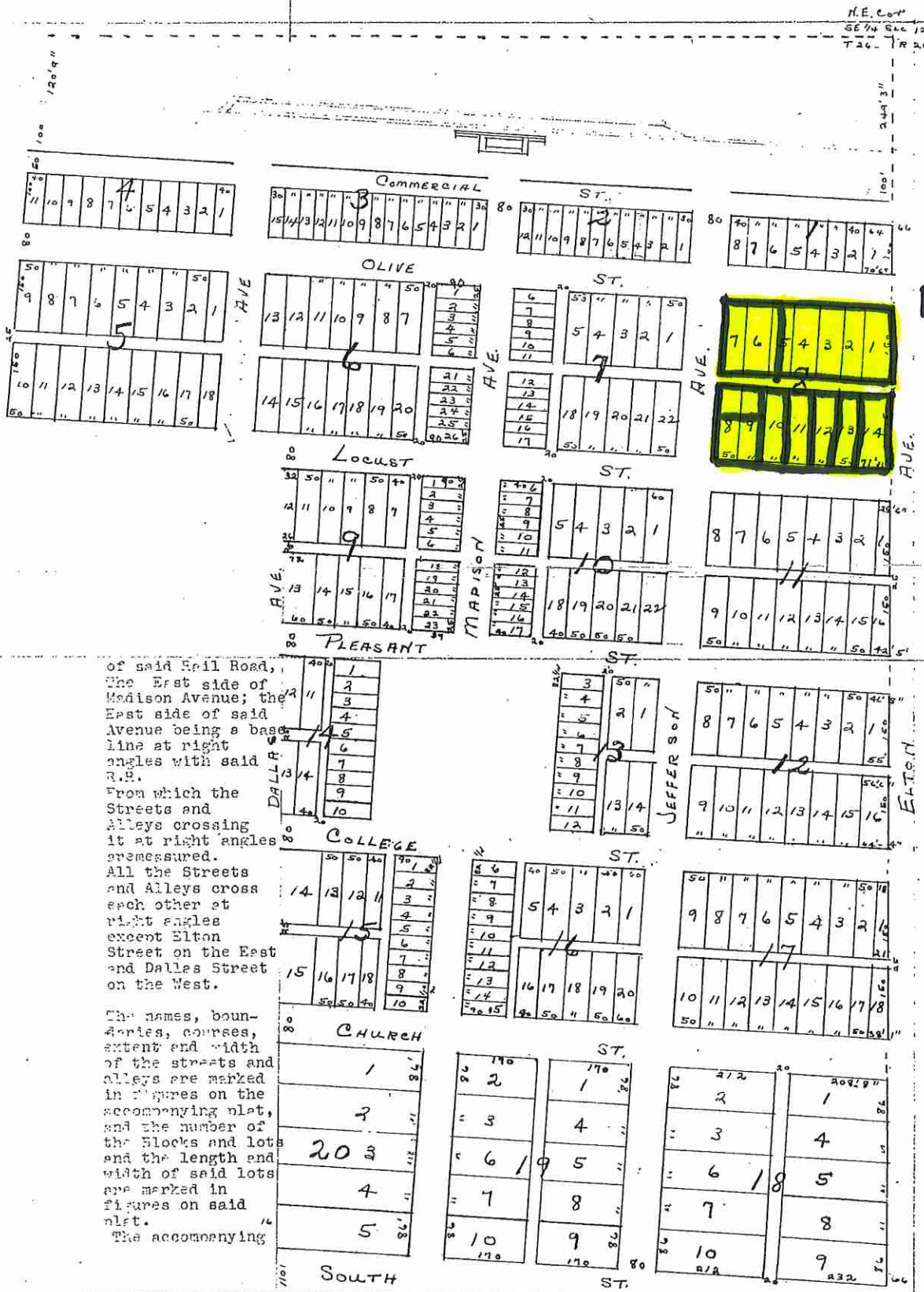


Aurora Missouri

The Town of Aurora, Lawrence County, Missouri, is situated in the Southeast Quarter of Section No. twelve (12) of Township No. twenty-six (26) North of Range No. twenty-six (26) West of the fifth principal meridian, embracing the most of the N.E. 1/4 S.E. 1/4 and the N.E. Corner of the N.W. quarter of said S.E. 1/4 of Section 12 commencing at a point in the range line (between Range 25 and 26) Three hundred and forty-nine feet (349) south of the North East corner of said South East quarter Section. Thence South (underlined wrong) 85° 30' W. (No Variation) Eight hundred and twenty-six (826) feet parallel to the South Pacific Rail Road and one hundred (100) feet South of the center of the track



BLOCK 8

of said Rail Road, The East side of Madison Avenue; the East side of said Avenue being a base line at right angles with said R.R. From which the Streets and Alleys crossing it at right angles are measured. All the Streets and Alleys cross each other at right angles except Elton Street on the East and Dallas Street on the West.

The names, boundaries, courses, extent and width of the streets and alleys are marked in figures on the accompanying plat, and the number of the blocks and lots and the length and width of said lots are marked in figures on said plat.

The accompanying