

DOTY TRASH SERVICE

6 7 8 - 1 3 5 0

"locally owned and operated"

Proposed Solid Waste Transfer Station Project Overview

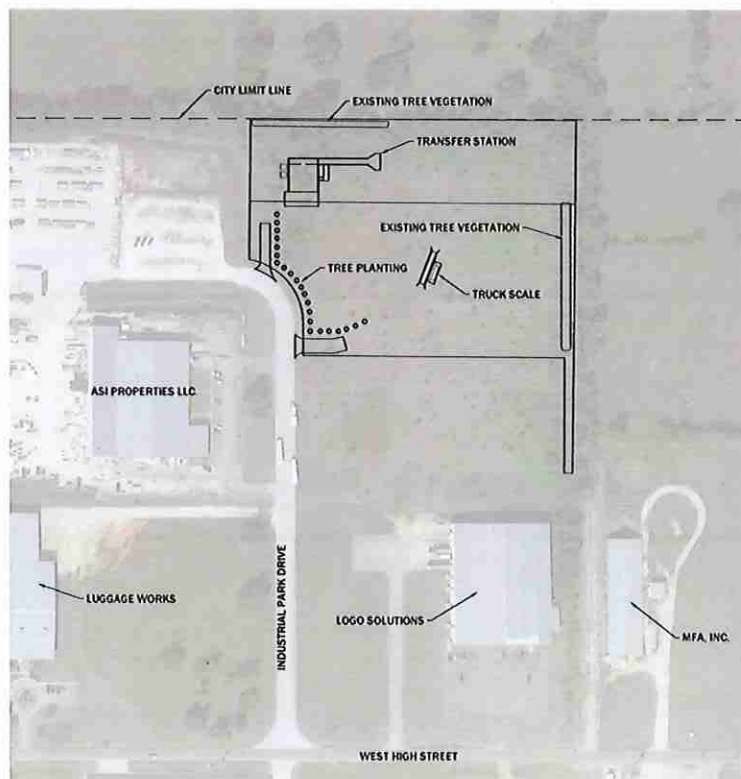
A SOLID WASTE TRANSFER STATION IS NOT A LANDFILL!

Solid waste transfer stations are facilities where solid waste, mainly municipal solid waste (MSW), is unloaded from collection vehicles or roll off containers inside of a building, then reloaded into semi-trailers for long-distance transportation to landfills or other permitted solid waste facilities for final disposal.

- Transfer stations make solid waste collection more efficient and reduce overall transportation costs, air emissions, energy use, truck traffic, and road wear and tear.
- Modern transfer stations are designed to collect wastewater, control spills, and minimize blowing litter, odor, and dust so that they have a minimal impact on the environment.
- Doty Transfer, LLC will monitor the facility grounds for blowing litter, dust, spills, and the presence of vectors such as rodents, insects or birds.
- According to the Department of Natural Resources, Missouri had 72 permitted landfills and 26 transfer stations in 1990. In 2014 there were 18 sanitary landfills and 54 transfer stations. The number of landfills keeps shrinking and the number of transfer stations grows.

PROPOSED LOCATION

The proposed solid waste transfer station will be constructed on a 7.34-acre property located at 9XX Industrial Park Drive, Aurora, Missouri. The property is located within the Aurora Industrial Park and is zoned M-2 General Industrial District. The property is located at the north end of Industrial Park Drive, a dead-end street. The property is currently undeveloped. The transfer station will be owned by Doty Real Estate, LLC and operated by Doty Transfer Station, LLC. Both companies are owned by Jessica Fleetwood and Waylon Doty.



Proposed Solid Waste Transfer Station

Project Overview

PROPOSED FACILITY

Refuse trucks will bring in solid waste from the City of Aurora and neighboring cities. The collection trucks will unload their contents inside the facility on a concrete floor and check for items that cannot be taken to a Missouri landfill. A front-loader will then load the solid waste into a semi-trailer that is also inside of the building. When filled, the semi-trailer will be covered with a tarpaulin and hauled to a permitted landfill.

The drive to the closest landfill is over a two-hour round trip. A semi-trailer can haul the equivalent of up to four smaller collection trucks. This results in a significant reduction in fuel consumption and wear-and-tear to the collection trucks. As a result of less available landfills, longer hauling distances require transfer stations to improve efficiency and economy of solid waste collection and disposal in Missouri.

The proposed facility will have a separate, fee-based area for non-commercial customers (cars, pickup trucks, small trailers) to drop off acceptable solid waste for the safety of commercial and non-commercial customers.

The proposed facility will also have a FREE source-separated citizen drop off area for use by residents of the City of Aurora.

The design of this solid waste processing facility/transfer station is developed in accordance with the Missouri Environmental Laws and the Aurora City Code. The Transfer Station is required to obtain two Missouri Environmental permits as well as City Building Permits prior to starting operation.

ECONOMIC IMPACT

The proposed facility will provide jobs and tax revenue to the City of Aurora. Reducing the cost of solid waste collection and disposal will help offset the rising cost of doing business, which will keep the solid waste collection fees for Aurora and Lawrence County residents down.

- Number of employees at full operation: 2+
- Health insurance and benefits provided to all employees.
- Positions will be filled from the local community when possible.
- Services and supplies will be purchased locally when possible.
- Construction of the transfer station will create construction jobs for the local economy.

BENEFITS AND IMPACTS TO THE COMMUNITY

- The proposed facility will also have a FREE source-separated citizen drop off area for use by residents of the City of Aurora.
- 3 or more full time jobs with health benefits will directly benefit local residents and the surrounding community.
- Increased payroll and sales/use tax revenues should directly benefit the City and surrounding communities.
- Nearby residents and businesses will experience minimal impact due to additional traffic to/from the site.
- Proposed weekday hours of operation are from 6:00 a.m. to 6:00 p.m. Monday through Friday and 7:00 a.m. to 12:00 noon Saturdays. The facility will close on Sundays.
- The operation will remove waste that does not belong in the landfill by screening the waste at the point it is placed on the floor.